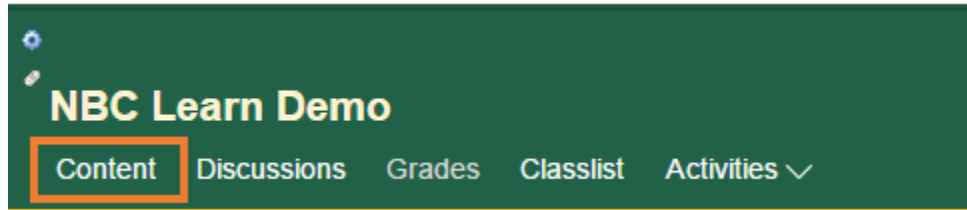
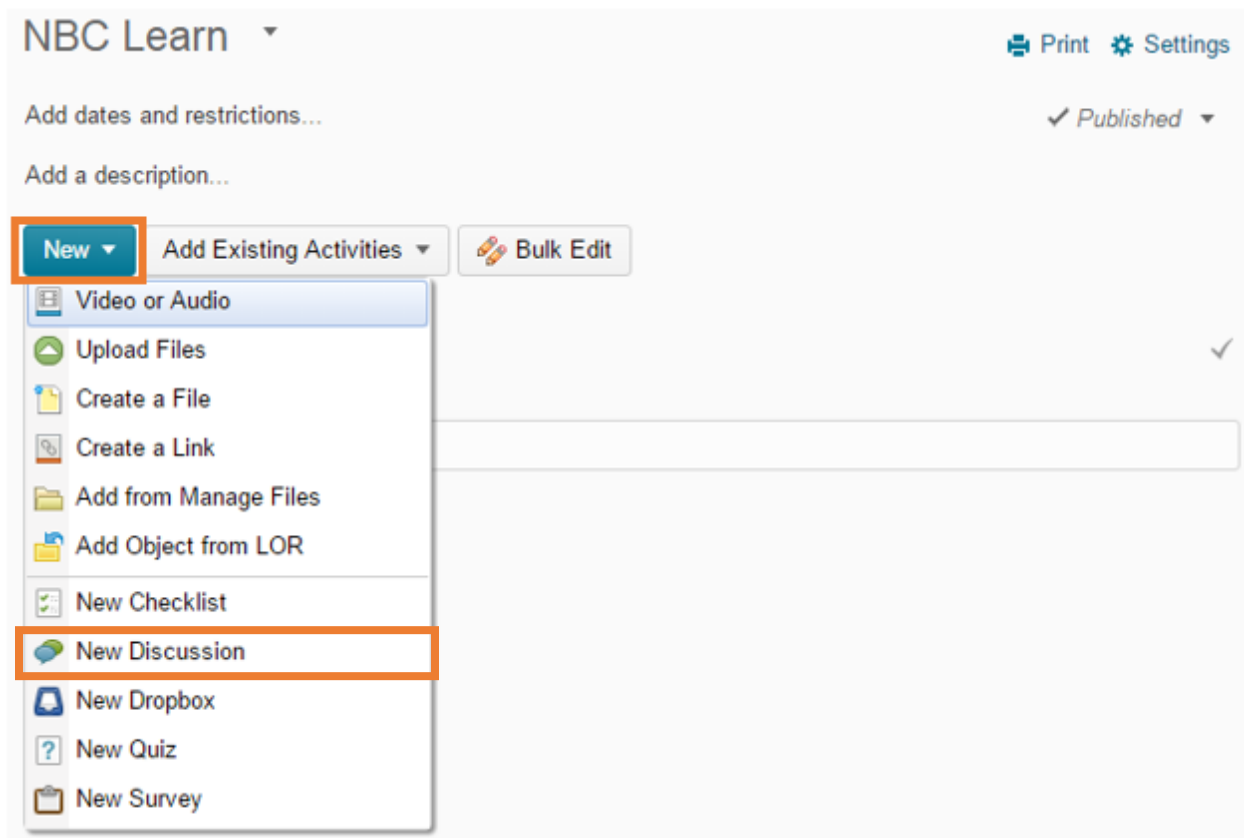


Embedding NBC Learn Content at Saint Leo University

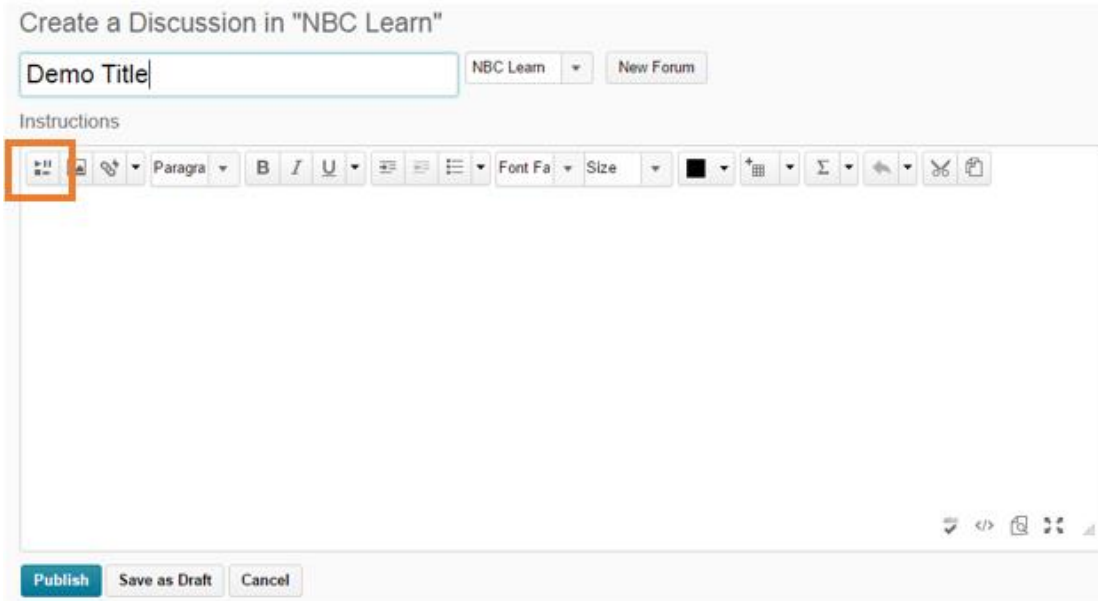
1. Log in to your Brightspace account through the [My Saint Leo Portal](#).
2. Navigate to the course you would like to embed NBC Learn content into, and click the Content button below.



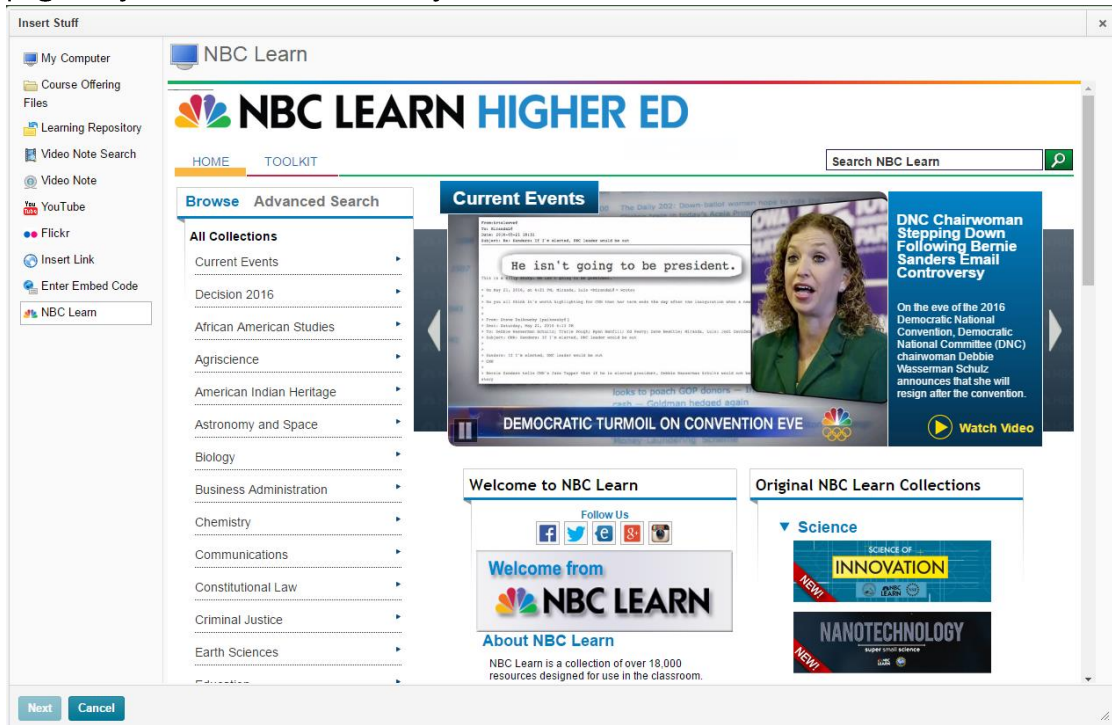
3. Content can be embedded into the Content or Course Tools areas in Brightspace. To illustrate how to do this, we will be embedding content into a Discussion. Click on Content, and you will see the below window. Click the New button, and select New Discussion from the drop down menu.



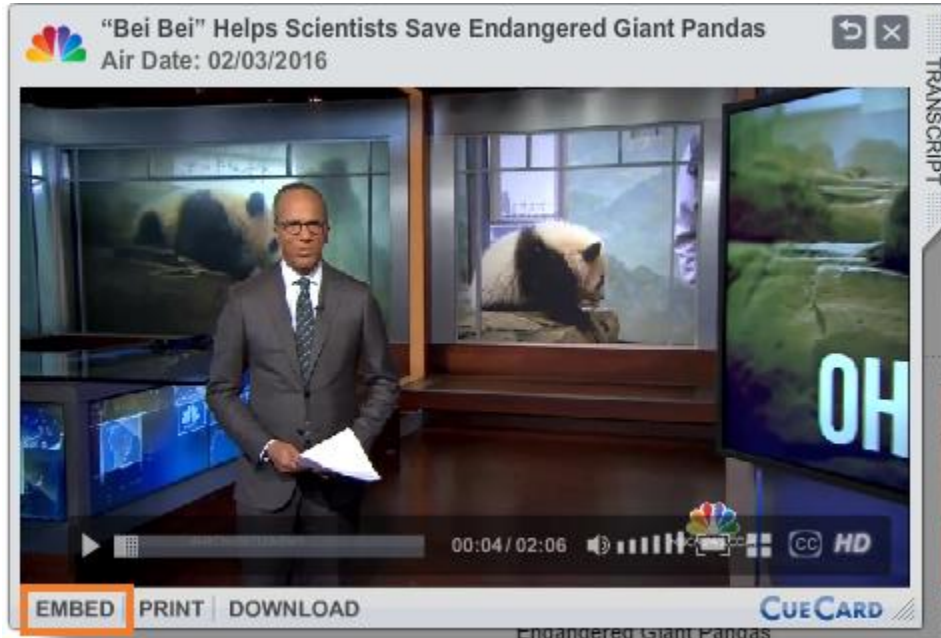
4. In the text editor, click the Insert Stuff button in the top left.



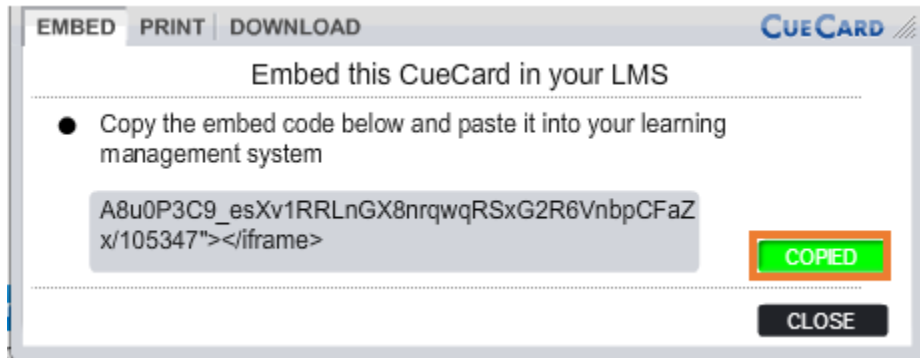
5. In the Insert Stuff window, select the NBC Learn tab. This will take you to the NBC Learn page for you to find the resource you would like to embed.



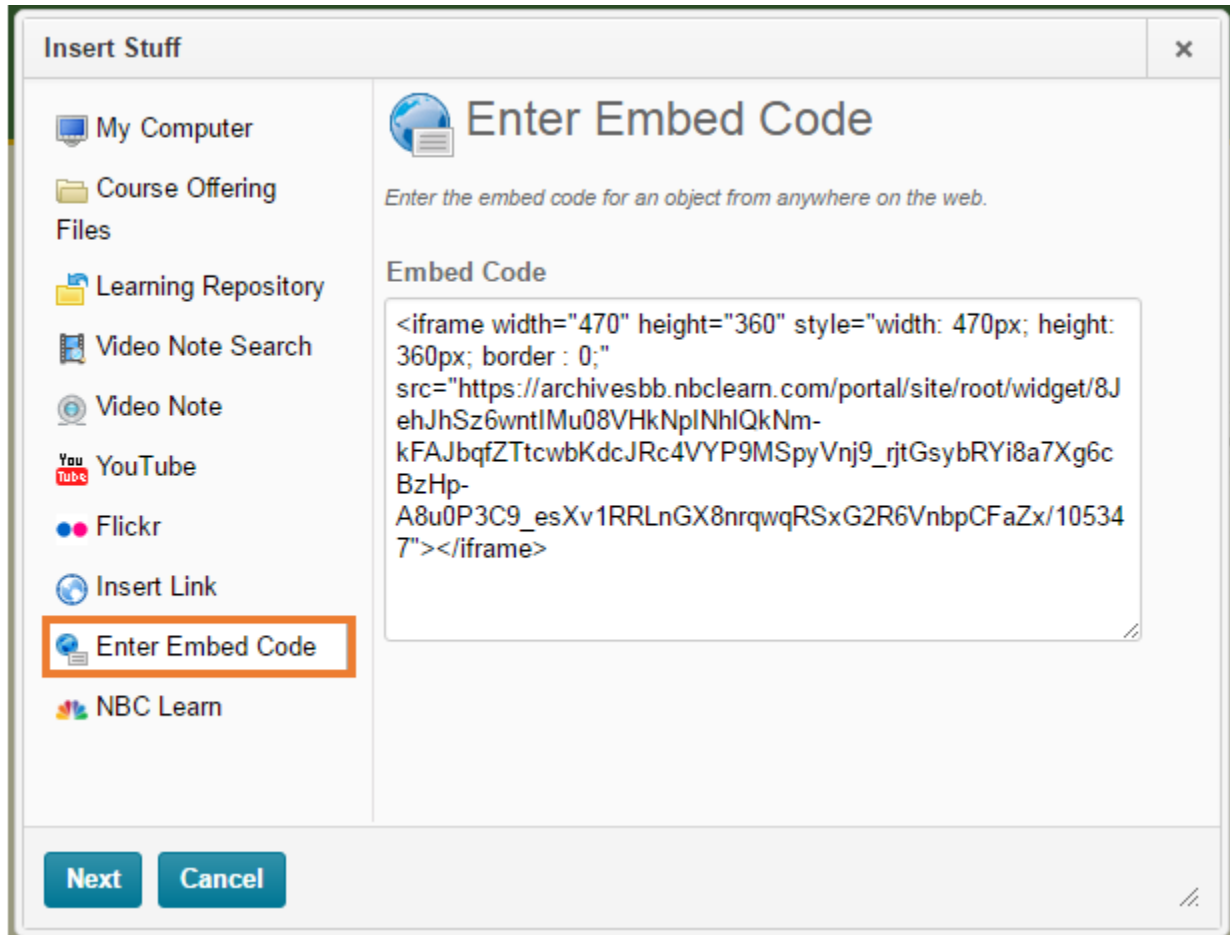
6. Once you select the resource you would like to embed, it will pop up in our CueCard. When it opens, click the EMBED button on the bottom left of the CueCard.



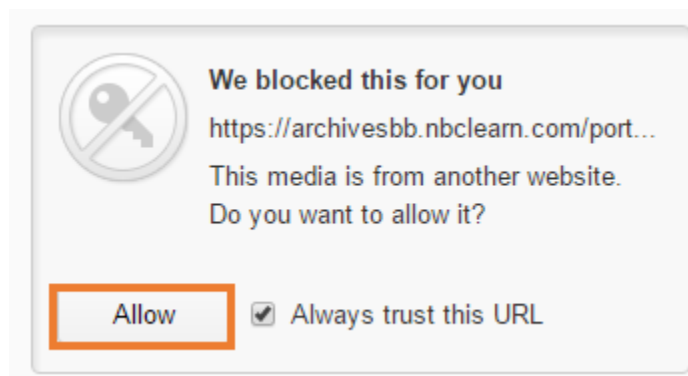
7. The below screen will pop out of the CueCard. Click the COPY URL button on the right to save the embed link.



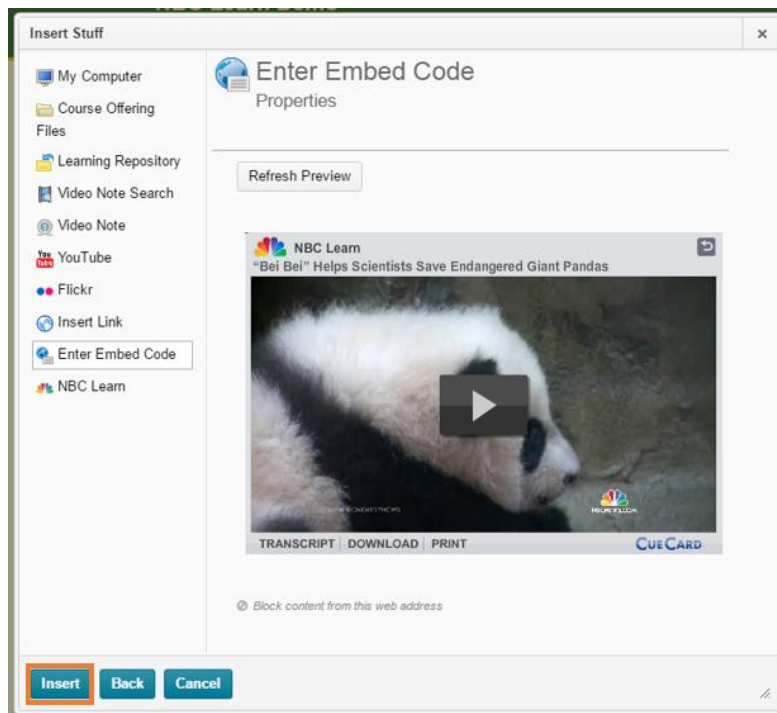
- Next, click on the Enter Embed Code tab on the left side of the Insert Stuff window. Paste (CTRL+V or right click and choose the paste option) the embed code into the box as shown below.



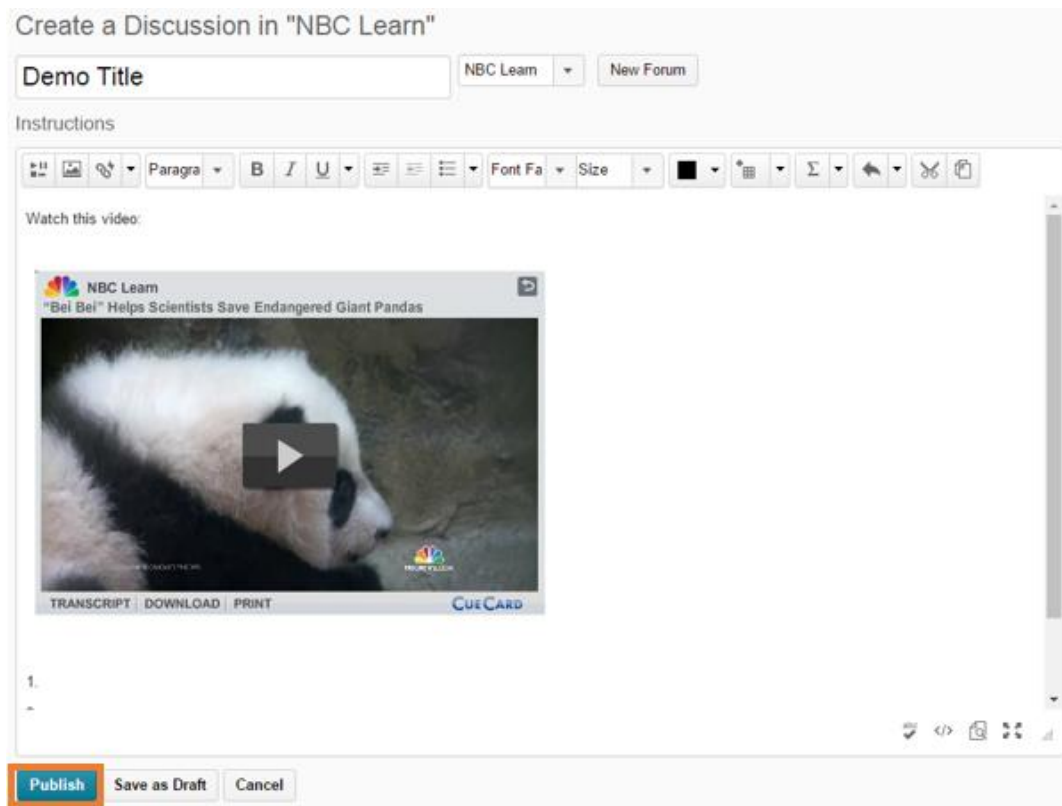
- Click the Next button in the bottom left of the Insert Stuff window.
- This will take you to a preview window. The first time you embed NBC Learn content, you will receive this warning. Please click the Allow button in the bottom left.



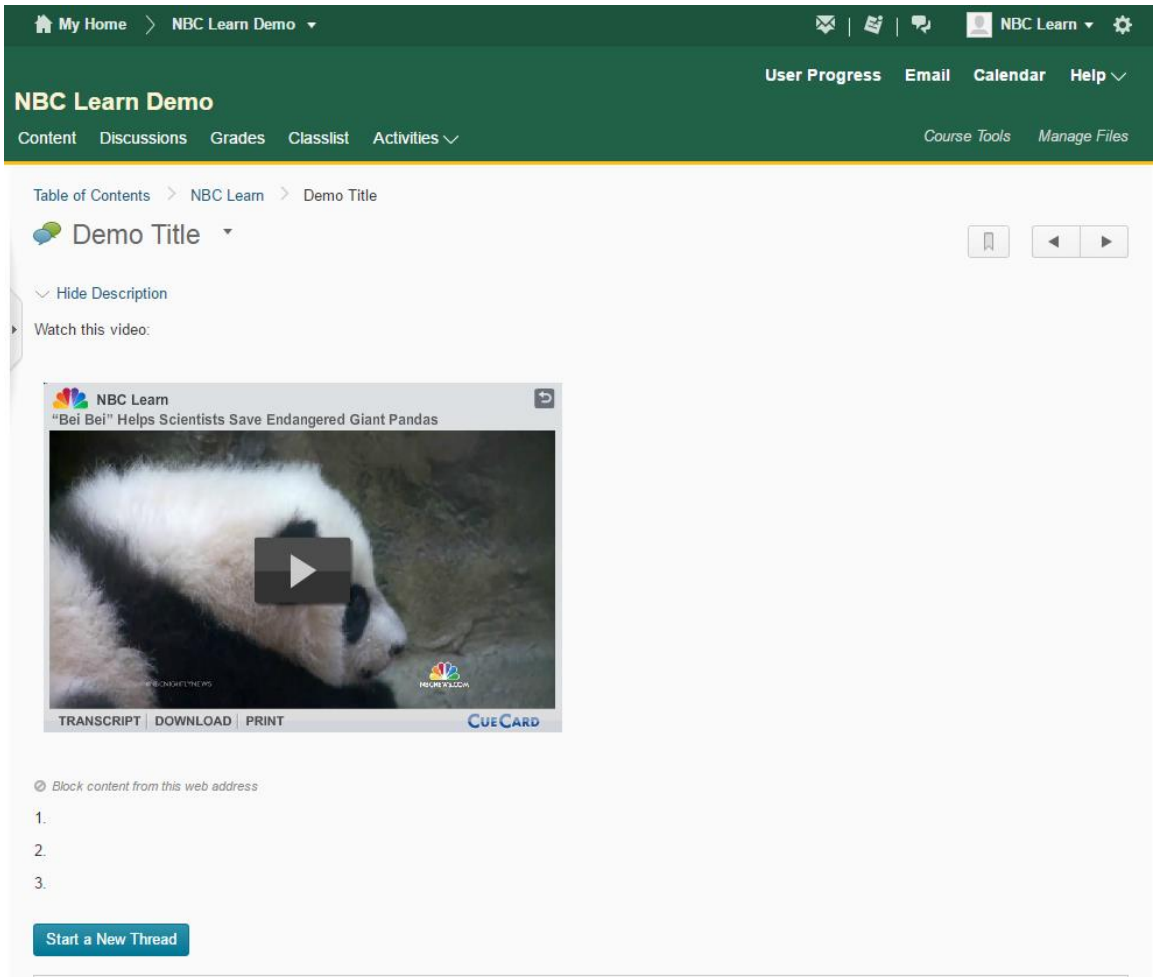
11. You will now see the full preview window. If the correct media appears, click the Insert button in the bottom left of the Insert Stuff window.



12. Your NBC Learn resource will now be seen in the text box. Once you have finished adding any text to accompany the resource, click the Publish button in the bottom left.



13. The final discussion page is below. Students and professors will be able to play the video without leaving the page.



The screenshot shows the NBC Learn Demo interface. At the top, there is a navigation bar with "My Home" and "NBC Learn Demo" on the left, and "User Progress", "Email", "Calendar", and "Help" on the right. Below this is a secondary navigation bar with "Content", "Discussions", "Grades", "Classlist", and "Activities" on the left, and "Course Tools" and "Manage Files" on the right. The main content area shows a breadcrumb trail: "Table of Contents > NBC Learn > Demo Title". Below this is a "Demo Title" dropdown menu with a bookmark icon and navigation arrows. A "Hide Description" link is visible. The main content area features a video player with the title "NBC Learn 'Bei Bei' Helps Scientists Save Endangered Giant Pandas". The video player includes a play button, a transcript link, a download link, a print link, and a CUECARD logo. Below the video player, there is a "Block content from this web address" option and a list of three numbered items (1., 2., 3.). At the bottom, there is a "Start a New Thread" button.